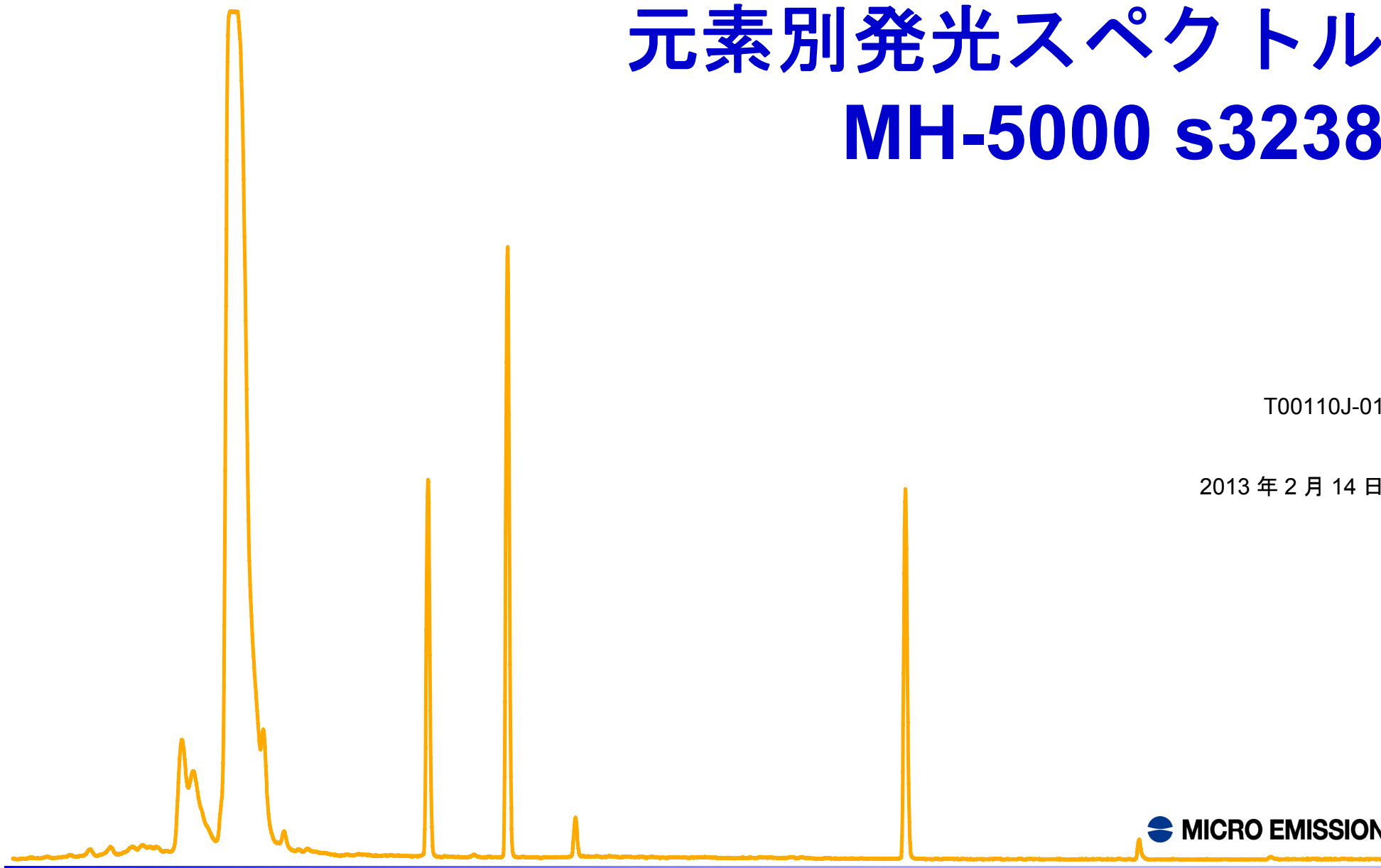
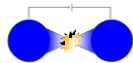


元素別発光スペクトル MH-5000 s3238

T00110J-01

2013年2月14日





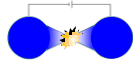
元素別発光スペクトル MH-5000 s3238

	1	2	3	4	5	6	7	8	9	10	11	12	13	14	15	16	17	18
1	H																	He
2	Li	Be											B	C	N	O	F	Ne
3	Na	Mg											Al	Si	P	S	Cl	Ar
4	K	Ca	Sc	Ti	V	Cr	Mn	Fe	Co	Ni	Cu	Zn	Ga	Ge	As	Se	Br	Kr
5	Rb	Sr	Y	Zr	Nb	Mo	Tc	Ru	Rh	Pd	Ag	Cd	In	Sn	Sb	Te	I	Xe
6	Cs	Ba	*	Hf	Ta	W	Re	Os	Ir	Pt	Au	Hg	Tl	Pb	Bi	Po	At	Rn
7	Fr	Ra	**															

凡例

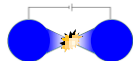
Cr	検出した
Fe	1000 mg/L で小さいピークを検出した
H	検出せず
H	未測定

*	La	Ce	Pr	Nd	Pm	Sm	Eu	Gd	Tb	Dy	Ho	Er	Tm	Yb	Lu
**	Ac	Th	Pa	U	Np	Pu	Am	Cm	Bk	Cf	Es	Fm	Md	No	Lr



名称	備考	改訂日
Ag		2013/02/14
Cr	酸化物の生成注意	2013/02/14
Cu		2013/02/14
Fe	酸化物の生成注意。100 mg/L で小さいピークを検出した。	2013/02/14

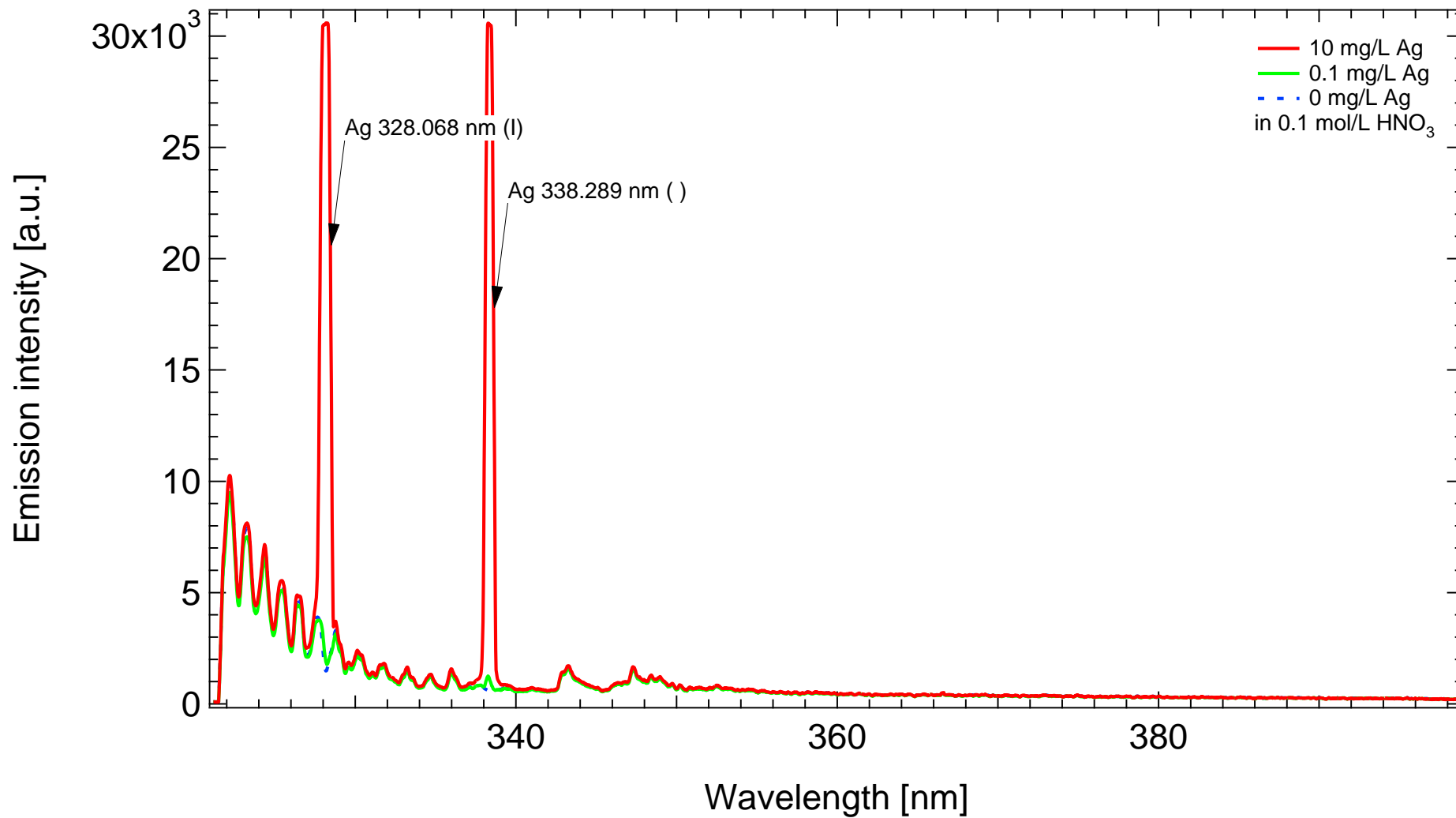
名称	備考	改訂日
Pd		2013/02/14
Rh		2013/02/14
Ru		2013/02/14

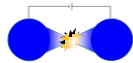


Ag

MH-5000 s3238
LepiCuve-C

Conditions: 850 V, (ON: 2 ms / OFF: 40 ms) × 40 pulses

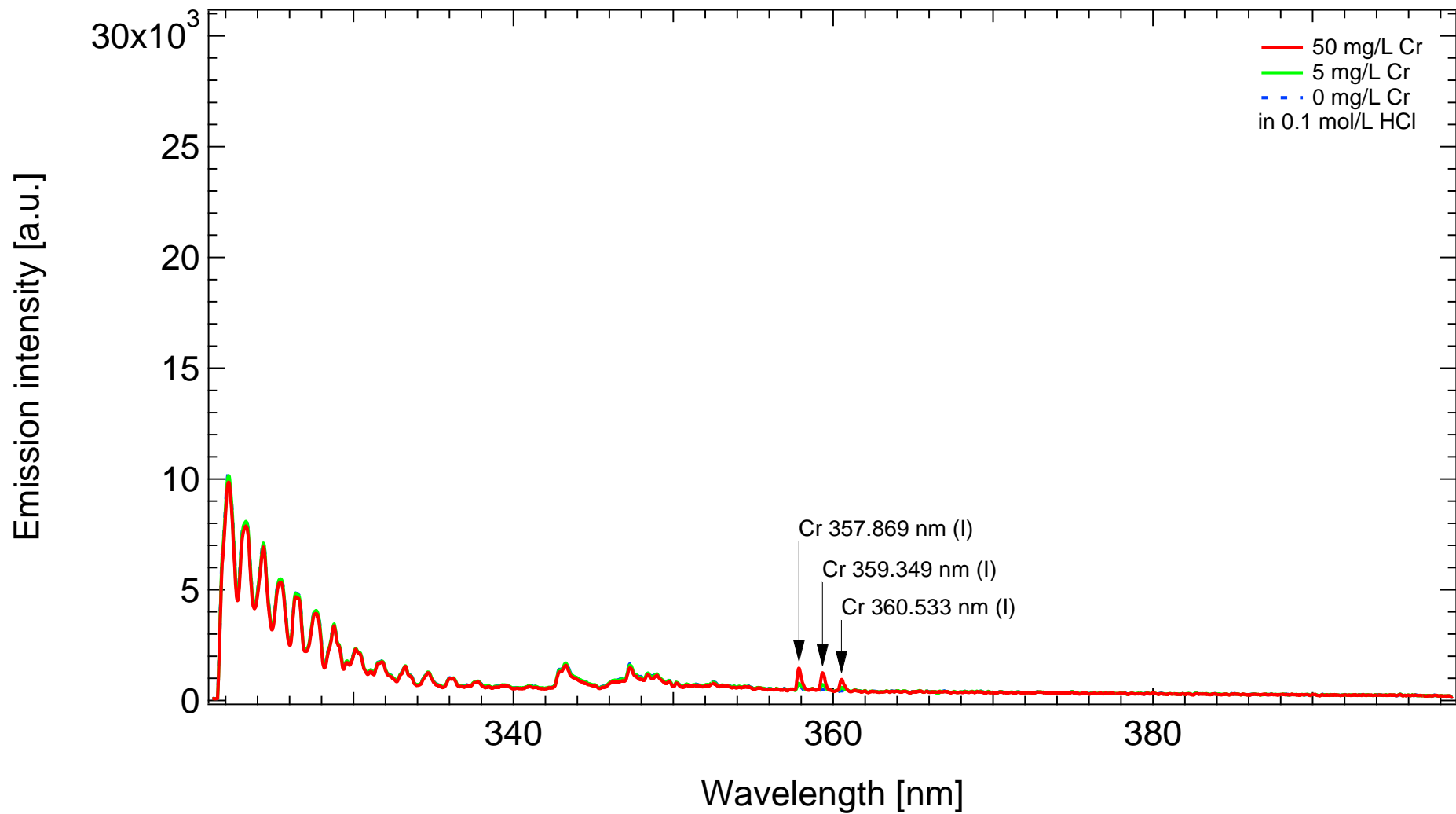


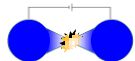


Cr

MH-5000 s3238
LepiCuve-C

Conditions: 850 V, (ON: 2 ms / OFF: 40 ms) × 40 pulses



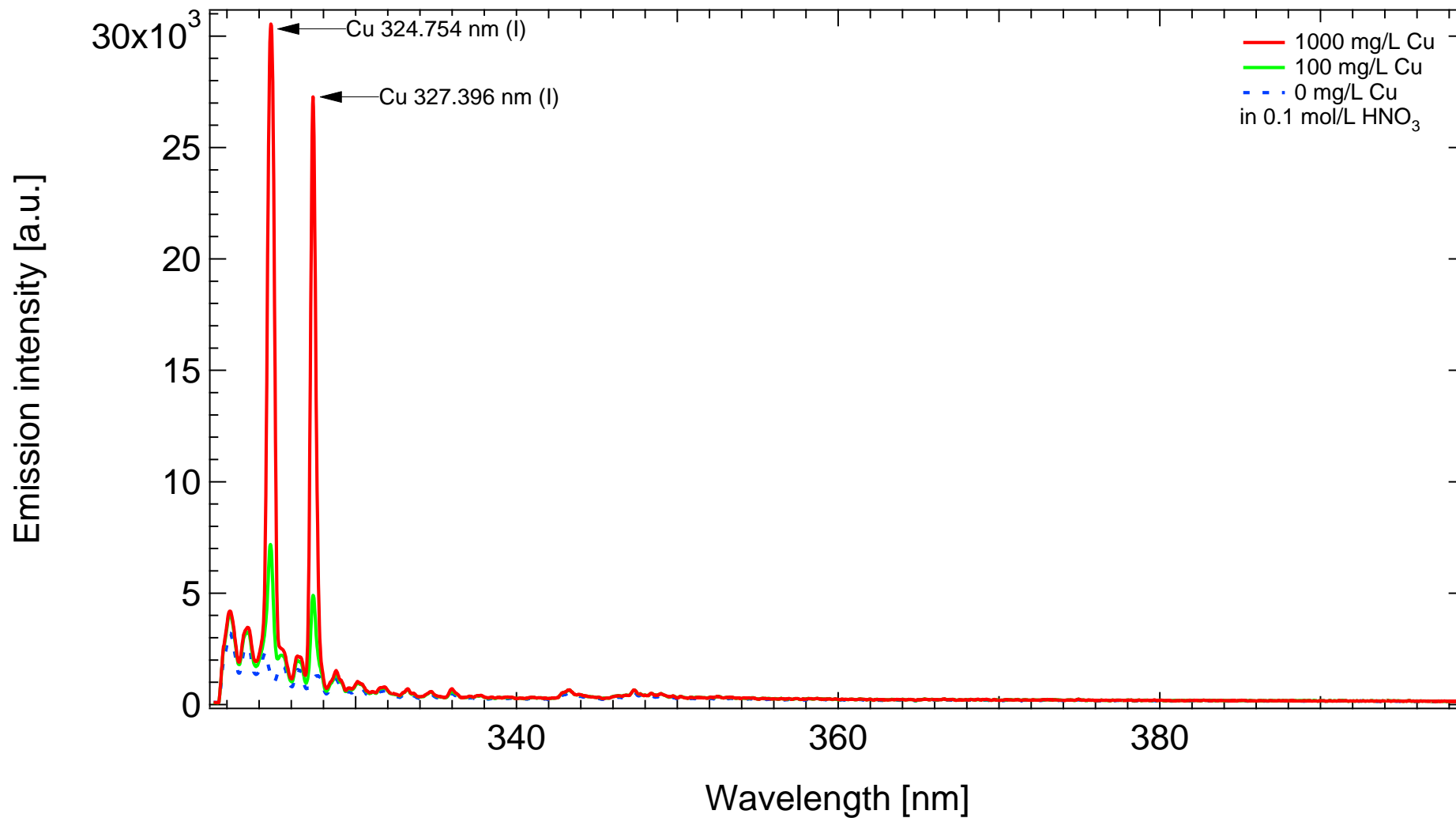


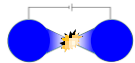
Cu

MH-5000 s3238

Conditions: 750 V, (ON: 2 ms / OFF: 40 ms) × 40 pulses

LepiCuve-C



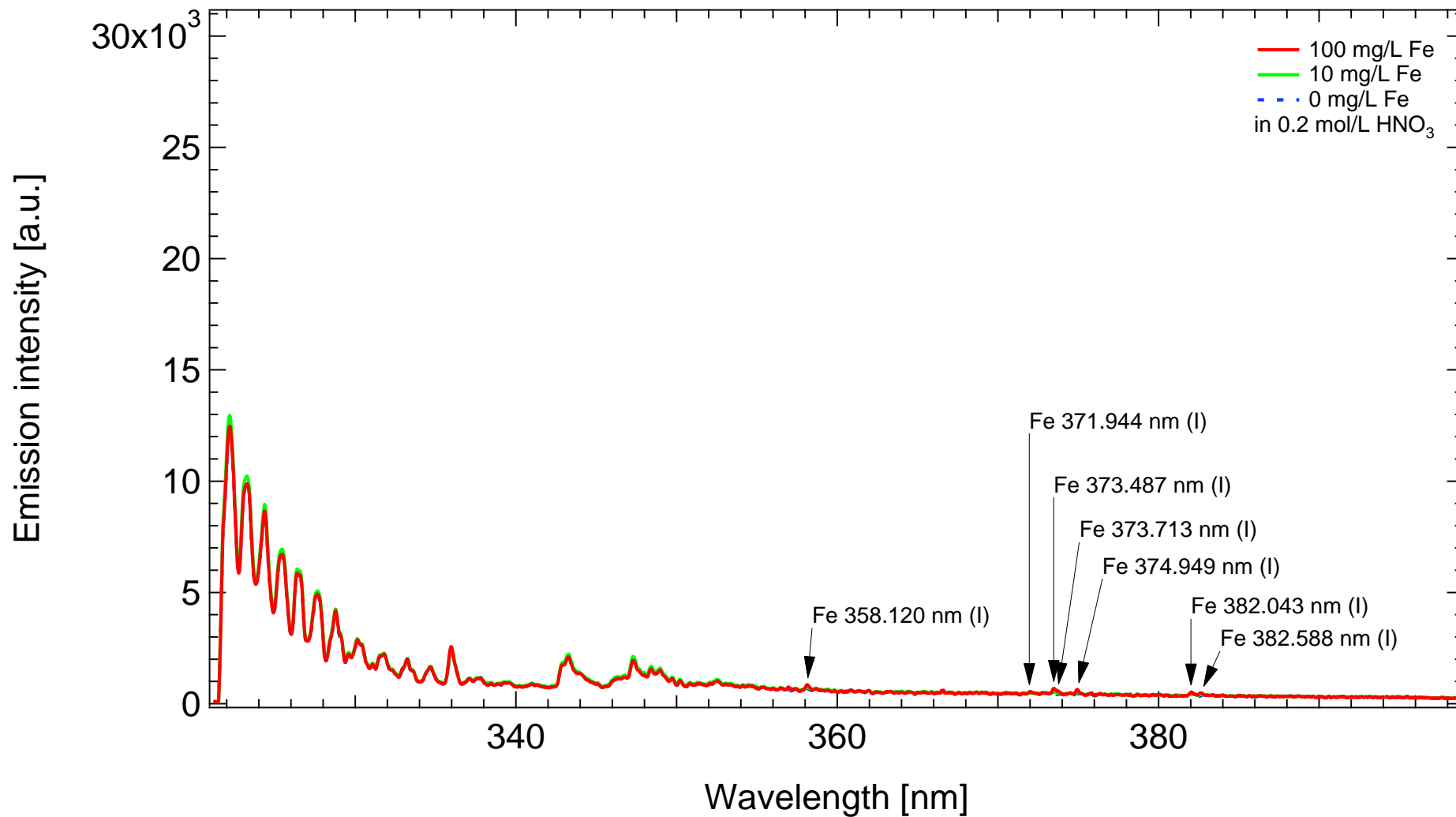


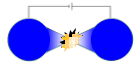
Fe

MH-5000 s3238

Conditions: 850 V, (ON: 2 ms / OFF: 50 ms) × 40 pulses

LepiCuve-C

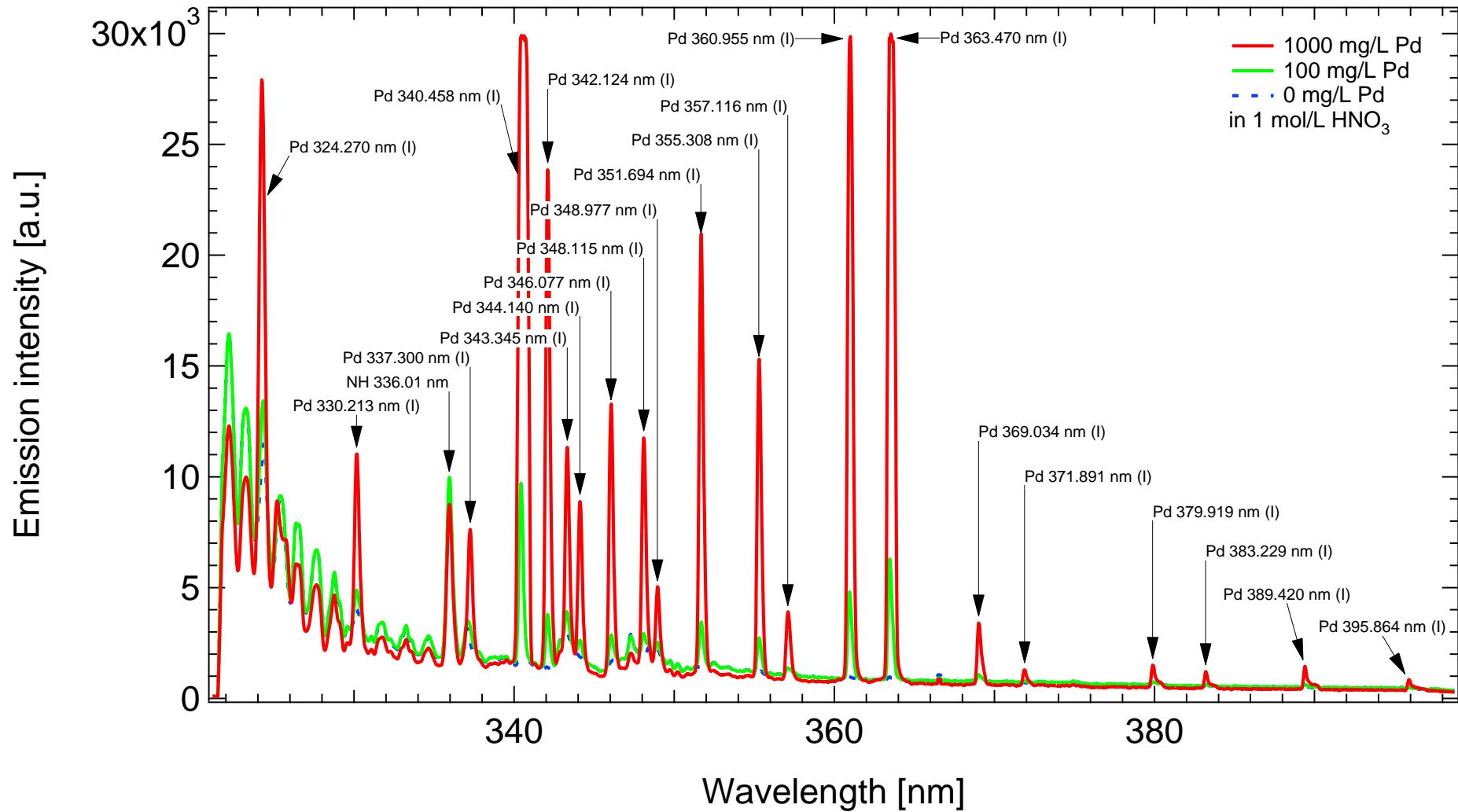


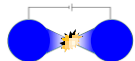


Pd

MH-5000 s3238
LepiCuve-C

Conditions: 750 V, (ON: 2 ms / OFF: 80 ms) × 70 pulses

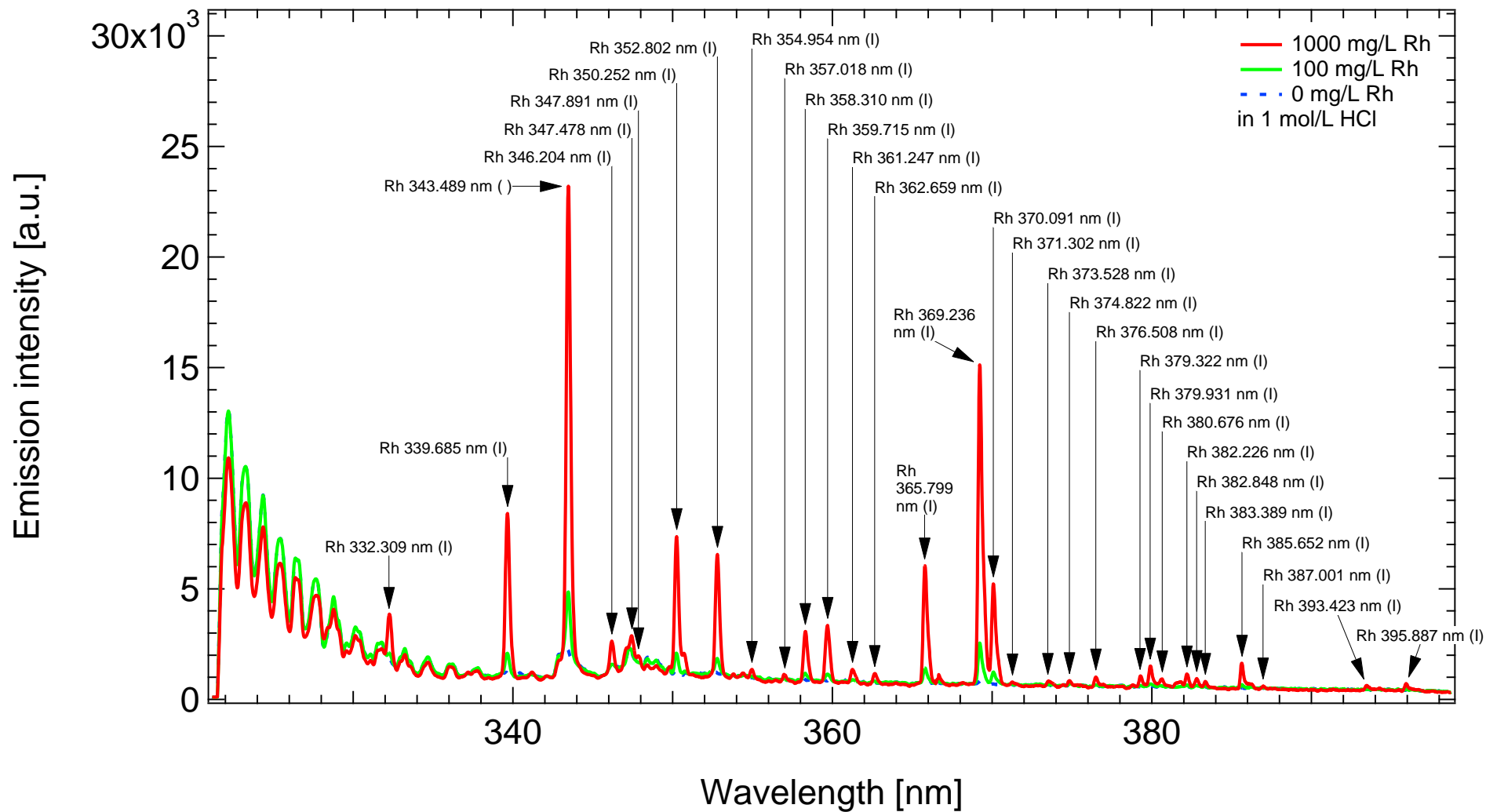


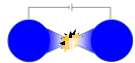


Rh

MH-5000 s3238
LepiCuve-C

Conditions: 750 V, (ON: 2 ms / OFF: 80 ms) × 70 pulses





Ru

MH-5000 s3238

Conditions: 750 V, (ON: 2 ms / OFF: 130 ms) × 40 pulses

LepiCuve-C

